

033330

RECEIVED
LARAMIE COUNTY
CLERK OF COURTS
CHEYENNE WY.

'87 AUG 28 AM 9 07

CERTIFIED LAND CORNER RECORDATION

DESCRIPTION OF CORNER EVIDENCE FOUND, AND ORIGINAL RECORD (If known)

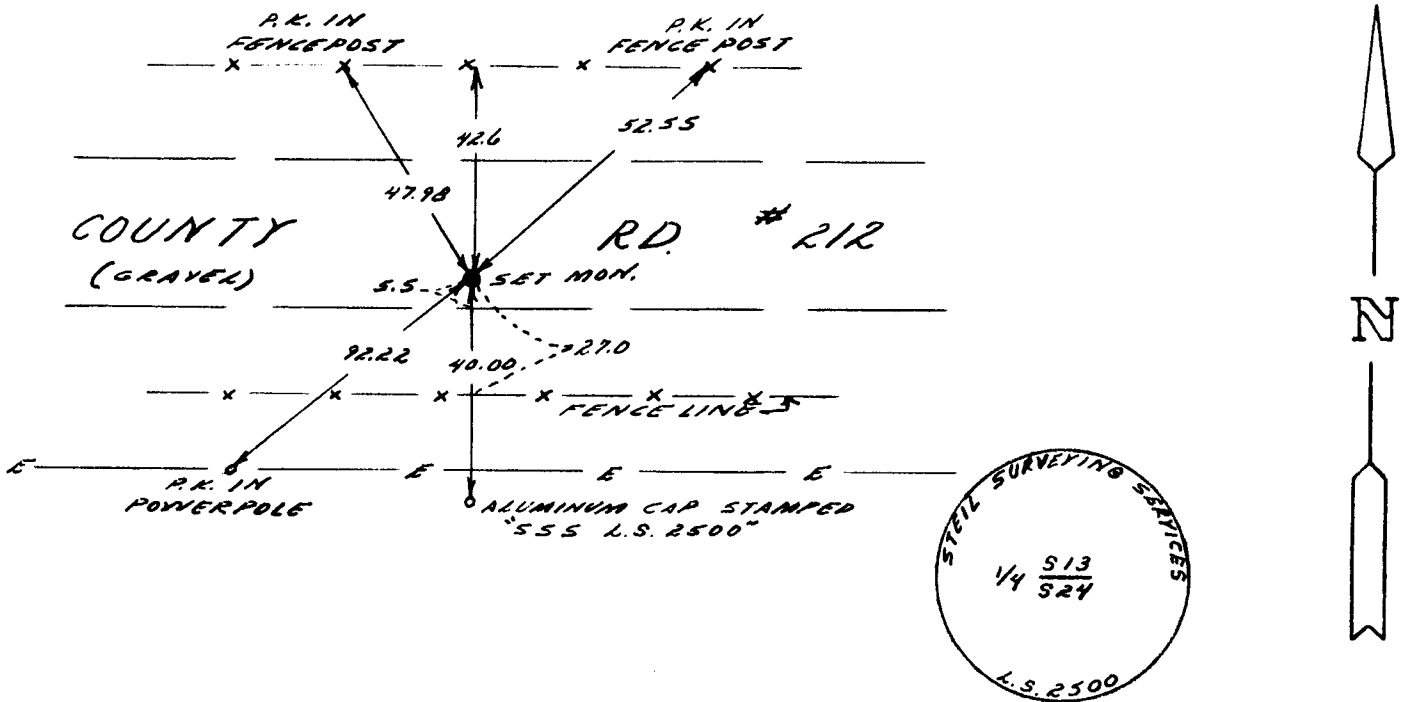
T. 14 N.
1/4 13
24
R. 62 W.

SET: 30" LONG ALUMINUM PIPE WITH 3-1/2" CAP 0.3 FEET BELOW ROAD SURFACE STAMPED AS SHOWN BELOW. SET USING EGBERT TOWN PLAT AND UNION PACIFIC RAIL-ROAD RIGHT-OF-WAY MAPS.

DESCRIPTION OF MONUMENT AND ACCESSORIES ESTABLISHED TO PERPETUATE THE ORIGINAL LOCATION OF THIS CORNER:

SEE TIES BELOW

SKETCH, WITH COURSE AND DISTANCE TO ADJACENT CORNER IF DETERMINED IN THIS SURVEY. (May Sketch or Paste Reproduction on Reverse Side.)



I, JOHN A. STEIL certify that I have carefully performed or reviewed the work done on the diagrammed corner as reported on this recordation form and approve the same.

John A. Steil L.S. 2500
Signature of Surveyor Registration No.

STATE OF WYOMING,
Office of Clerk and Recorder,
County of Laramie

This "corner record" was filed for record on the 28 day of August, 1987, was noted on the cross-index plat and is assigned page No. _____, in book No. _____

Janet C. Whitehead
County Official
Index No. N-23 T. 14 N R. 62 W Mer. 6th
____ T. _____ R. _____ Mer. _____
____ T. _____ R. _____ Mer. _____
____ T. _____ R. _____ Mer. _____
____ T. _____ R. _____ Mer. _____
____ T. _____ R. _____ Mer. _____
____ T. _____ R. _____ Mer. _____